



**UNLOCK
IAQ CONTROL
– INTELLIGENTLY**

Clean air solutions

AirImage 2.0

Reduce downtime, save money

The AirImage 2.0 sensor system is an intelligent solution for monitoring and controlling Camfil CamCleaners to optimize indoor air quality. It tracks and predicts optimal filter change frequency and based on measured indoor air quality, the AirImage 2.0 adjusts the fan speed, leading to lower energy costs.



Mounting points and cable management

- Easy installation on the wall, shelf or standing on the table with flexible cable management.

Connections

- On/Off switch
- USB-C for power supply
- COM – Communication port for service
- Ethernet – Modbus TCP or BacNet connection for BMS

In- and outlet:

Sensor holes for PM, temperature, RH and CO₂

Easy control

Simple control of all installed CamCleaners via IAQ Mode. Schedule or define a manual fan speed setting.

Navigation menu



Remote controllable

The AirImage 2.0 provides users with the ability to control the entire Camfil CamCleaner portfolio.



Integrated solution

The AirImage 2.0 is compatible with the majority of user systems allowing for seamless integration and enhanced functionality across various platforms.



Efficient filter change

By monitoring filter pressure drop, filter changes can be optimised.



Real time air quality monitoring

Real time measurement of particle matter (PM1, PM2,5, PM10) temperature, humidity and CO₂ on the IoT portal, enables real time data-driven decisions when immediate action is needed.



Energy savings

The AirImage 2.0 helps reduce energy bills by actively adjusting the CamCleaner fan speed to achieve the desired IAQ.



Data monitoring

Monitoring historical data (daily, monthly or yearly) of IAQ on the IoT portal, offers the opportunity to analyze trends and improve future planning and decision-making.

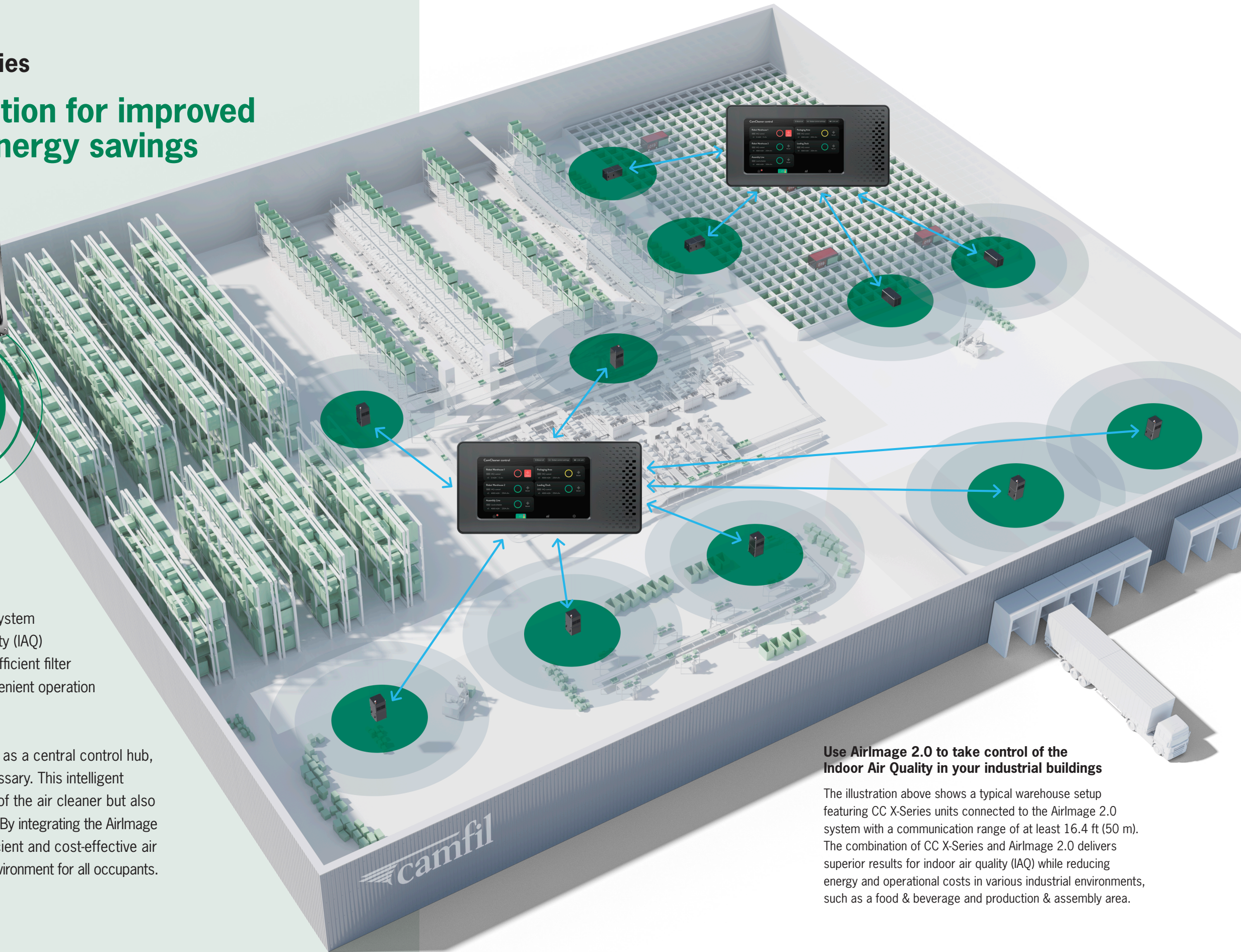
AirImage 2.0 and CC X-Series

The perfect combination for improved IAQ and maximum energy savings



The AirImage 2.0 is an advanced air monitoring system designed to simplify and optimize Indoor Air Quality (IAQ) management. With features like remote control, efficient filter changes, and seamless connectivity, it offers convenient operation and energy savings.

When paired with the CC X, the AirImage 2.0 acts as a central control hub, ensuring the CC X-Series operates only when necessary. This intelligent coordination not only optimizes the performance of the air cleaner but also reduces energy consumption and operational costs. By integrating the AirImage 2.0 into your facility, you can achieve a more efficient and cost-effective air quality management system, ensuring a healthier environment for all occupants.



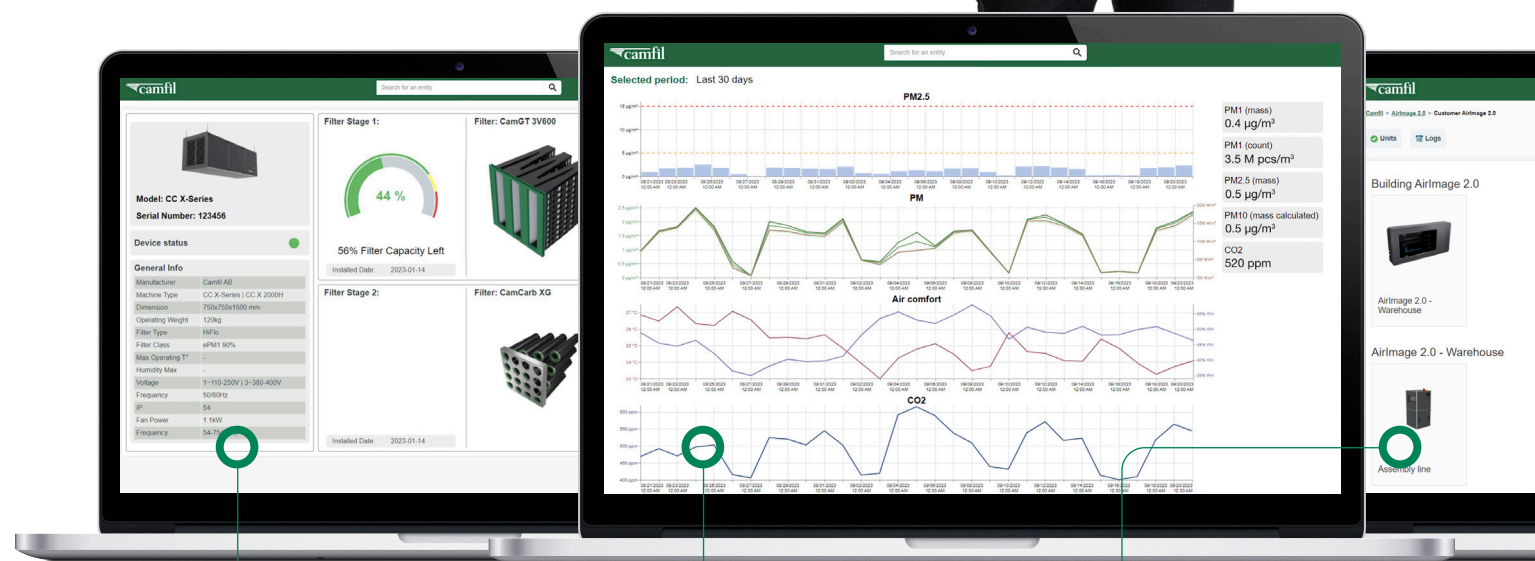
Use AirImage 2.0 to take control of the Indoor Air Quality in your industrial buildings

The illustration above shows a typical warehouse setup featuring CC X-Series units connected to the AirImage 2.0 system with a communication range of at least 16.4 ft (50 m). The combination of CC X-Series and AirImage 2.0 delivers superior results for indoor air quality (IAQ) while reducing energy and operational costs in various industrial environments, such as a food & beverage and production & assembly area.

IoT portal

All your data and equipment available at a glance – wherever you are

With the AirImage 2.0 you can effortlessly control all your CC X-Series units. The system is optimized for easy access and provides a comprehensive overview by sending all data to the cloud, which you can view on the IoT portal. This includes historical data such as temperature, humidity, CO₂, and PM values. Tracking this historical data is crucial as it can help or influence future decisions. Additionally, you can monitor the status of your filters and set up notifications when filters need to be replaced.



Track your CC X-Series devices

- Monitor filter status
- Set notifications
- Easy to understand interface

Historical data overview

- View historical data
- Track improvements
- Identify possible changes in your process for quality control purposes

Overview of your devices

- Easy access to all your installed devices

Specifications

AirImage 2.0

System

| | |
|--------------|---|
| Display | 7" LED touch screen |
| Dimensions | 9.65 x 4.88 x 1.26 in (245 x 124 x 32 mm) |
| Weight | 2.1 lbs (950 g) |
| Power supply | USB-C, 5V, 10W, min 1.5A |

Sensor specification

| | |
|------------------------------|--|
| Mass concentration precision | ±10% |
| Mass concentration range | 0–1000 µg/m ³ |
| Particle size range | PM1.0, PM2.5, PM4*, PM10* (*calculated by algorithm) |

Sensor specification temperature

| | |
|-----------------------------|------------------------------|
| Typ. temperature accuracy | 33.4 °F (0.8 °C) |
| Operating temperature range | 14 °F – 140 °F (-10 – 60 °C) |

Sensor specification CO₂

| | |
|-------------------|--------------|
| Measurement range | 400–2000 ppm |
| Accuracy baseline | ±50 ppm |

Sensor specification humidity

| | |
|---------------------------------|----------|
| Typ. Relative humidity accuracy | 6% RH |
| Mass concentration range | 0–95% RH |

Calibration certificate

| | |
|--------------------|------------|
| Factory calibrated | |
| Lifetime | > 10 years |

Communication

| | |
|-----------|---|
| External | 4G to send data to Cloud |
| Internal | ETH (Modbus or BacNet) |
| Service | COM – serial port with an RJ45 connector |
| Wifi mesh | Range min. 16.4 ft (50 m) communication with CamCleaner |

Settings

| | |
|-----------|---|
| Languages | English, Chinese, French, German, Italian, Portugese, Spanish, Swedish, Finnish, Danish, Norwegian, Dutch |
| Units | Metric & imperial |
| Alarms | |
| Other | Screen saver, brightness, historical data |

As part of our continuous improvement, Camfil reserve the right to change specifications without notice.

Camfil – a Global Leader in Air Filters and Clean Air Solutions.

For more than half a century, Camfil has been helping people breathe cleaner air. As a leading manufacturer of premium clean air solutions, we provide commercial and industrial systems for air filtration and air pollution control that improve worker and equipment productivity, minimise energy use, and benefit human health and the environment.

We firmly believe that the best solutions for our customers are the best solutions for our planet, too. That's why every step of the way – from design to delivery and across the product life cycle – we consider the impact of what we do on people and on the world around us. Through a fresh approach to problem-solving, innovative design, precise process control and a strong customer focus we aim to conserve more, use less and find better ways – so we can all breathe easier.

The Camfil Group is headquartered in Stockholm, Sweden, and has 30 manufacturing sites, six R&D centres, local sales offices in 35+ countries, and about 5 700 employees and growing. We proudly serve and support customers in a wide variety of industries and in communities across the world. To discover how Camfil can help you to protect people, processes and the environment, visit us at www.camfil.com.

www.camfil.US



www.camfil.com

For further information please contact your nearest Camfil office.